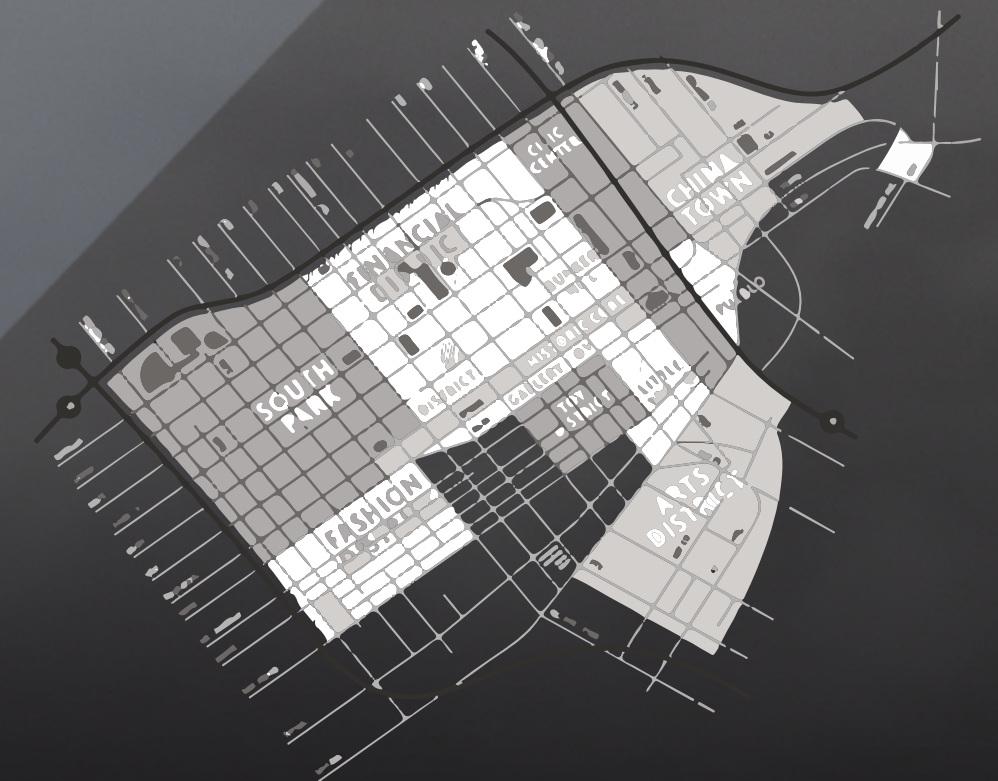


Refugia

See through their eyes
Hear through their ears
Sense through their senses

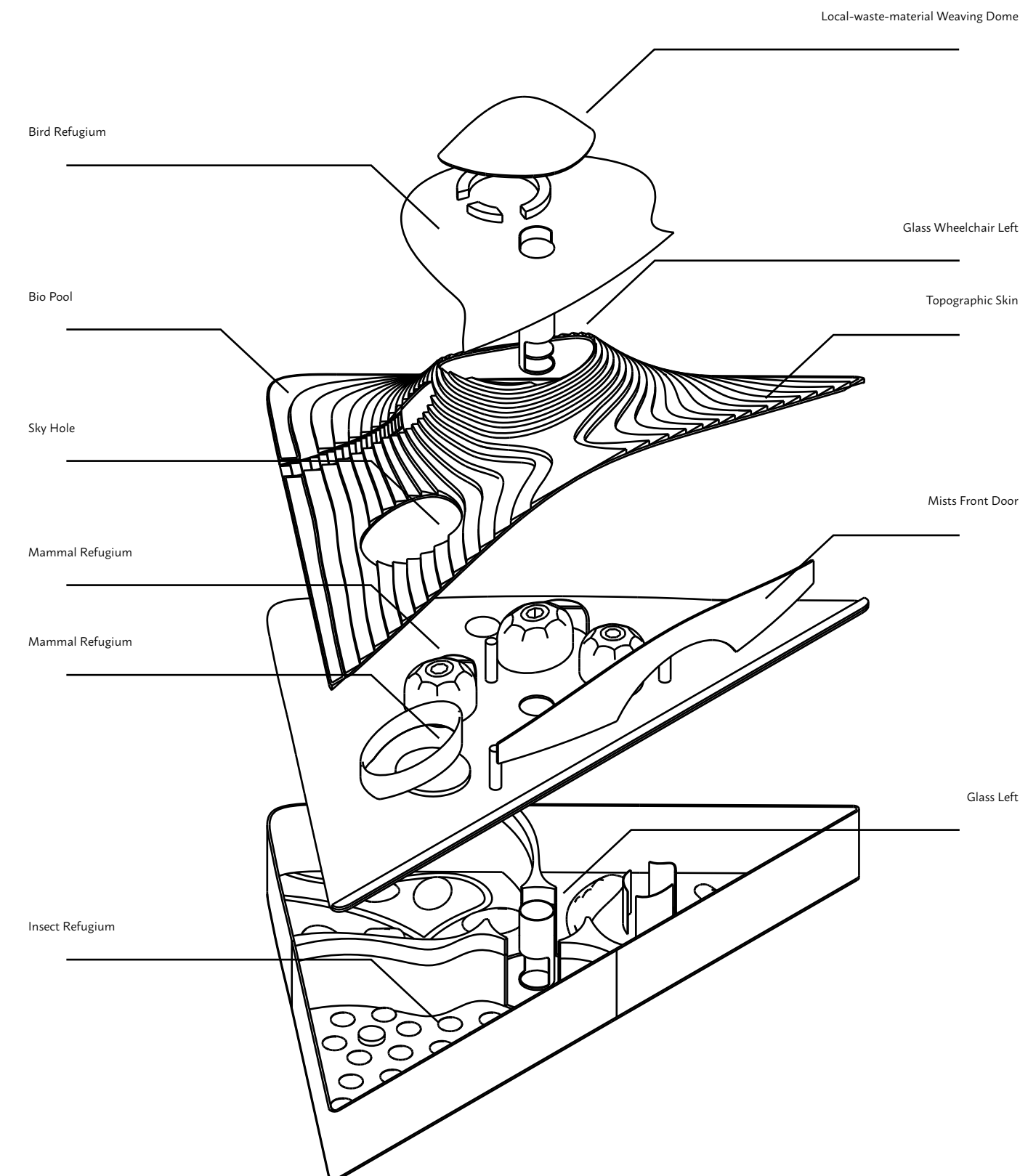
Learn and feel
animals' adaptation
to the urban environment.

Position: Triangle Park, LA, CA 90012

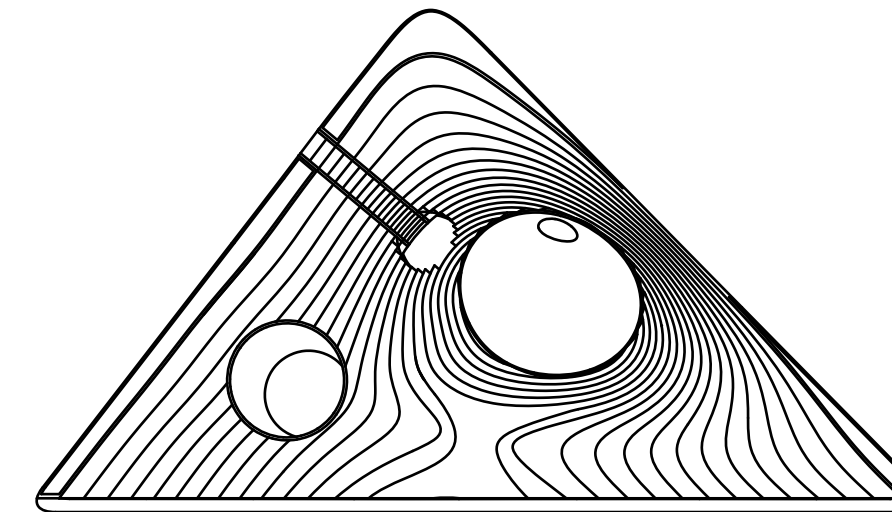


About Refugia

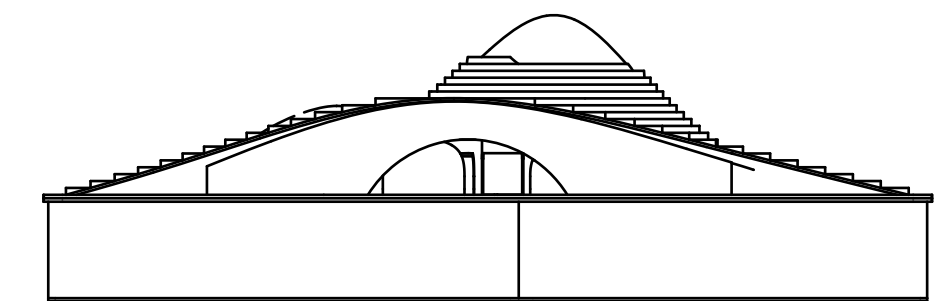
Refugia is an urban animal den for audiences to experience from animals' perspectives. It provides a sensory experience of animals' sight and feeling, and shows the adaptation of animals to the urban environment. It's a good place for people to rethink their relationship with nature.



Top View



Front View



People in art districts

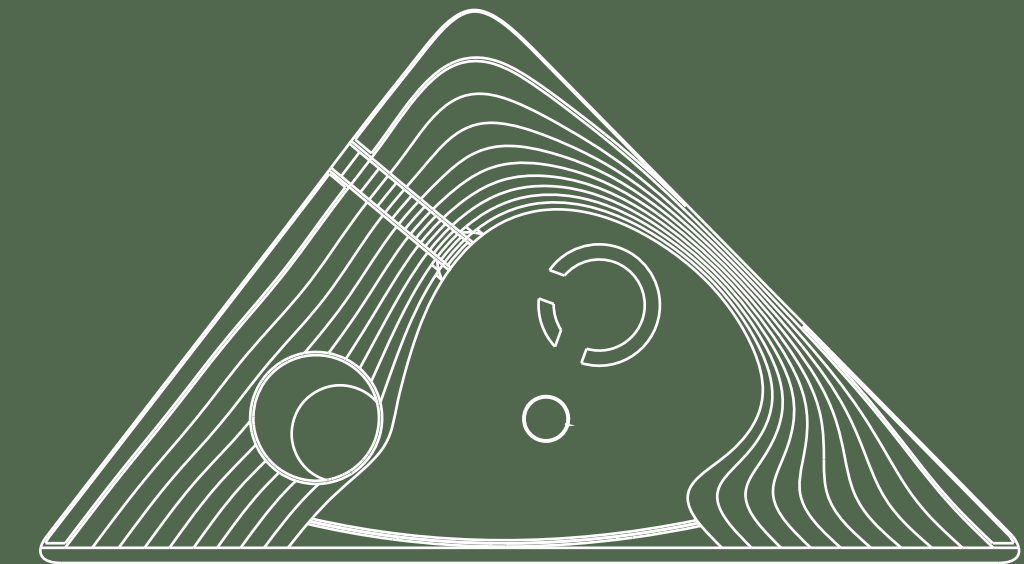


Urban Wild Animals

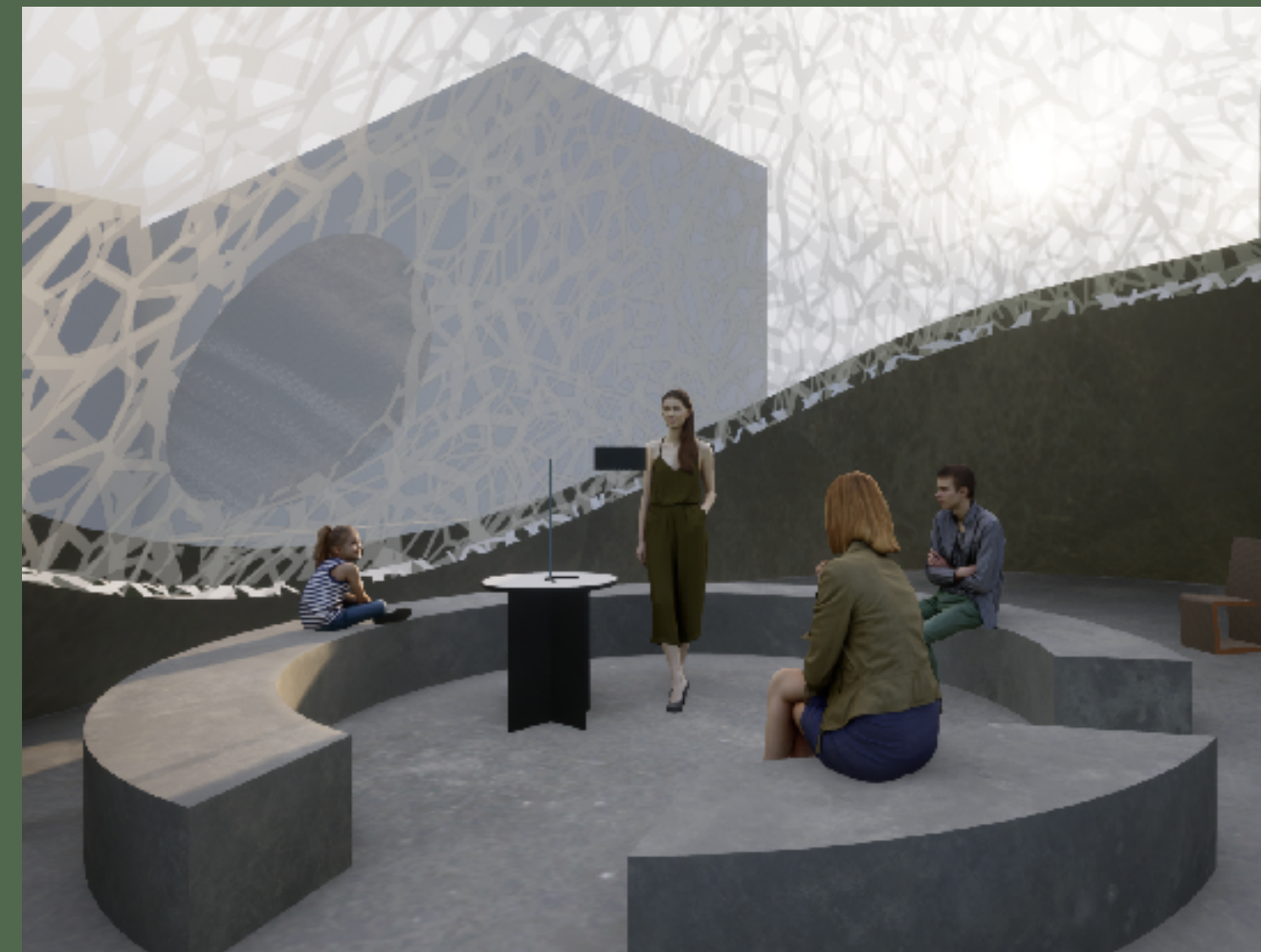


Bird Refugium

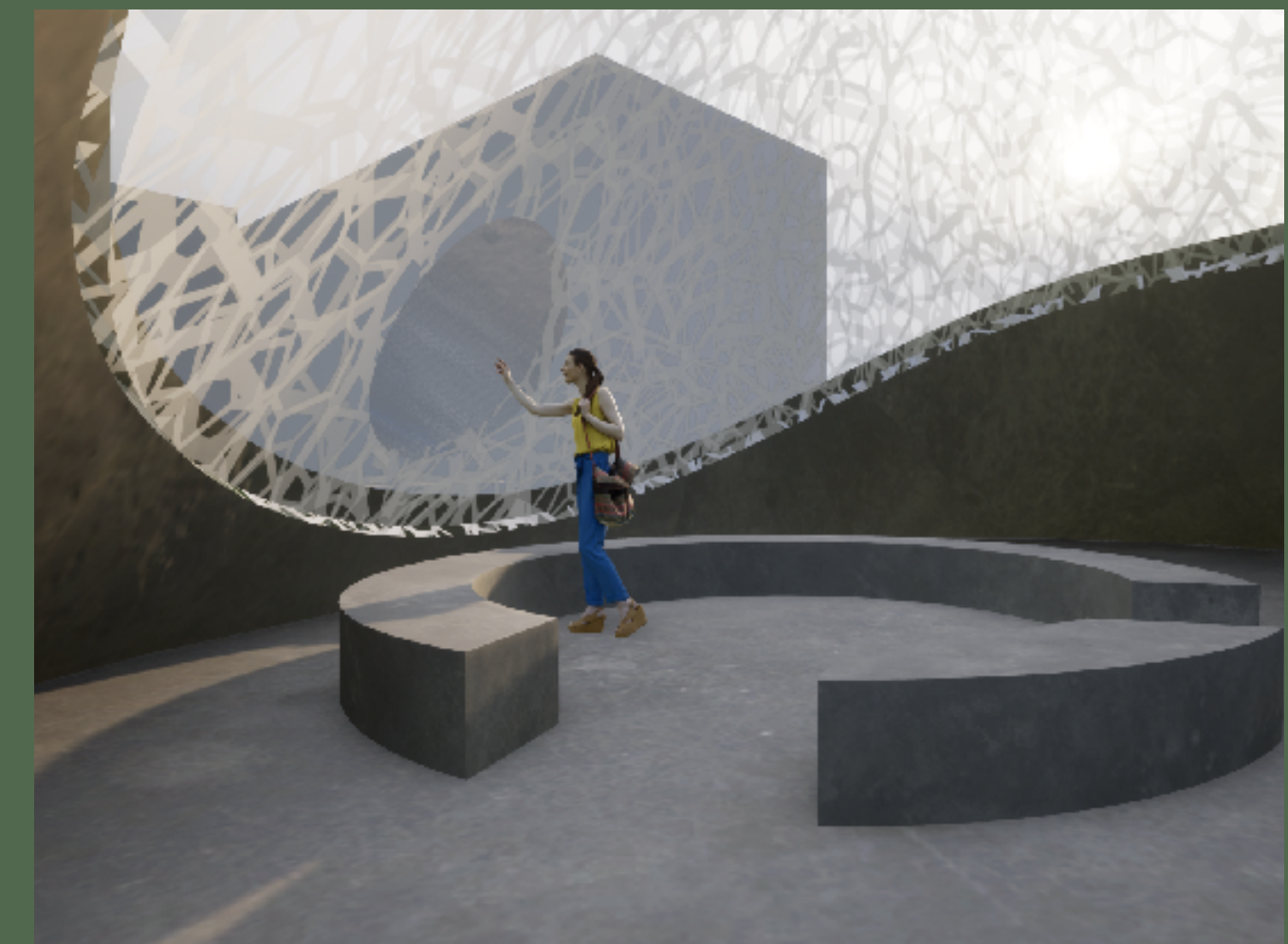
A place to learn birds' resourcefulness, and to sit and discuss local waste materials and how to reuse them.



The dome of the room is weaved with local waste materials. Inside, there are installations and products made of the same local materials. Instructions and material sample are offered to the person want to make their own!



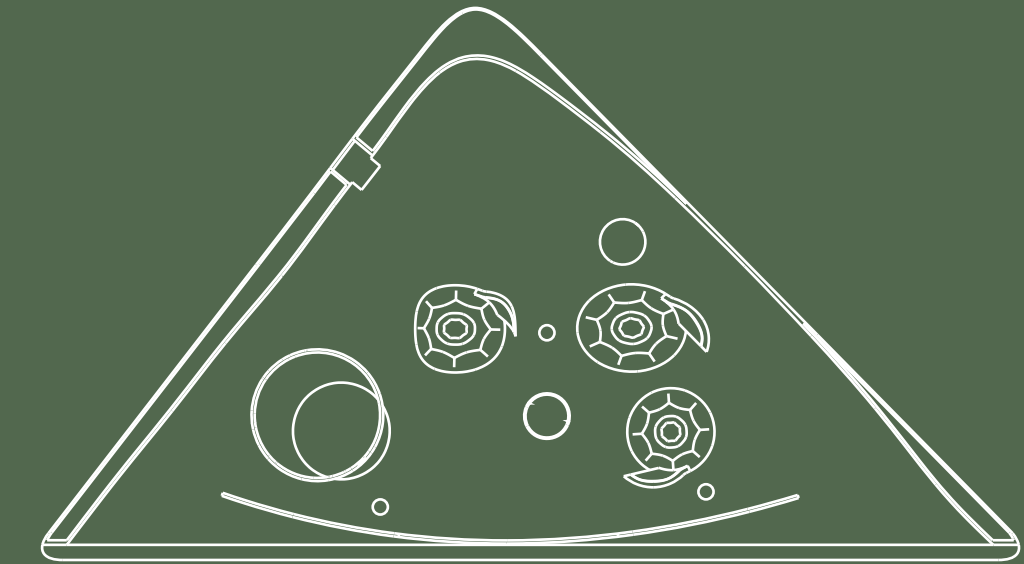
Some professionals are regularly invited to give relevant speeches here. It also allows users to share their own experiences in reusing local waste materials.



Experience the vision of birds through this special window, which is a bird's vision len, to see the regular urban environment in a different vision.

Mammal Refugium

A place to learn about mammals' active periods and to think about the relationship between city and mammal.



Three screening rooms, representing three mammals that are now present in the city: coyote, deer, and raccoon



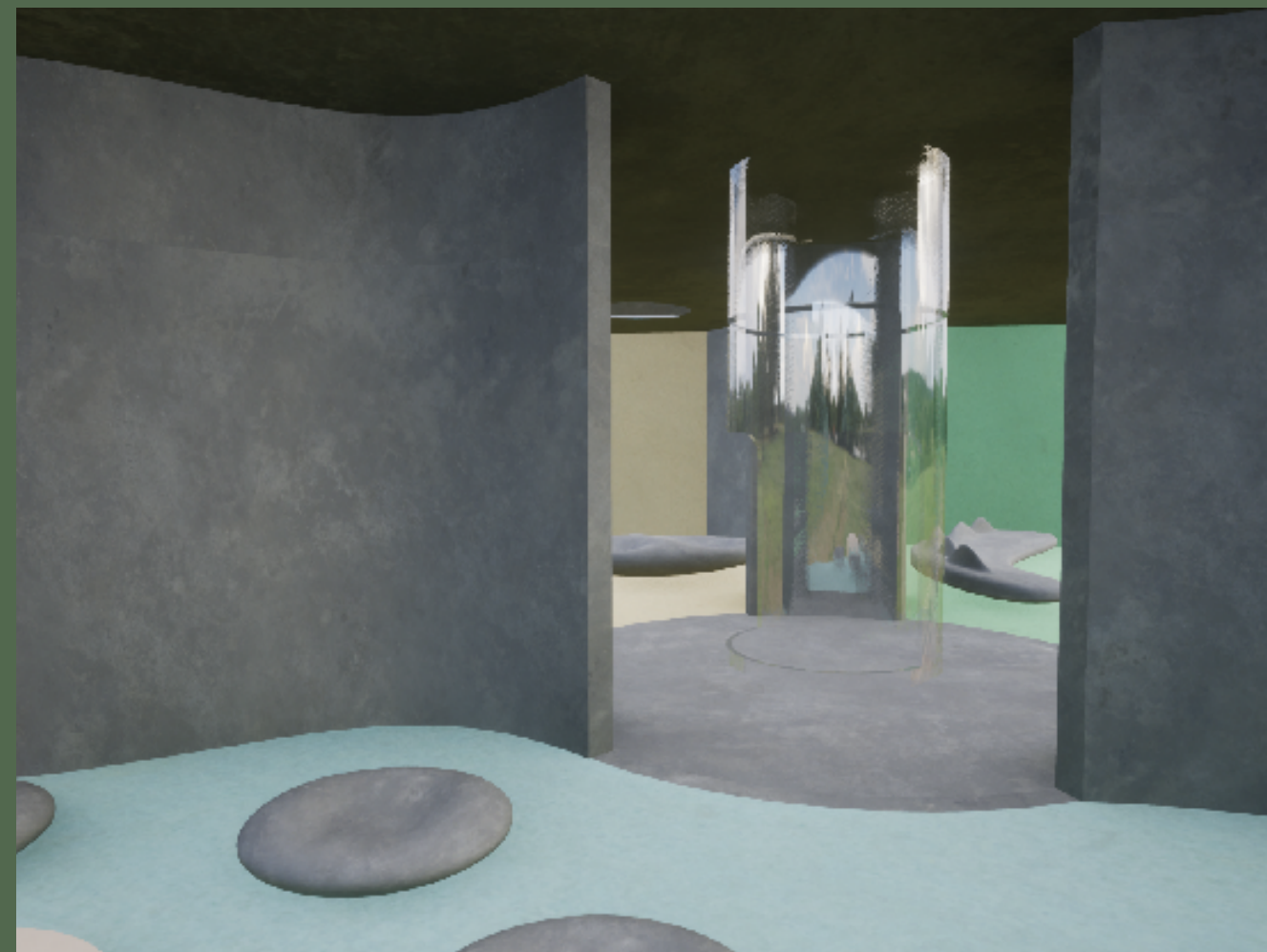
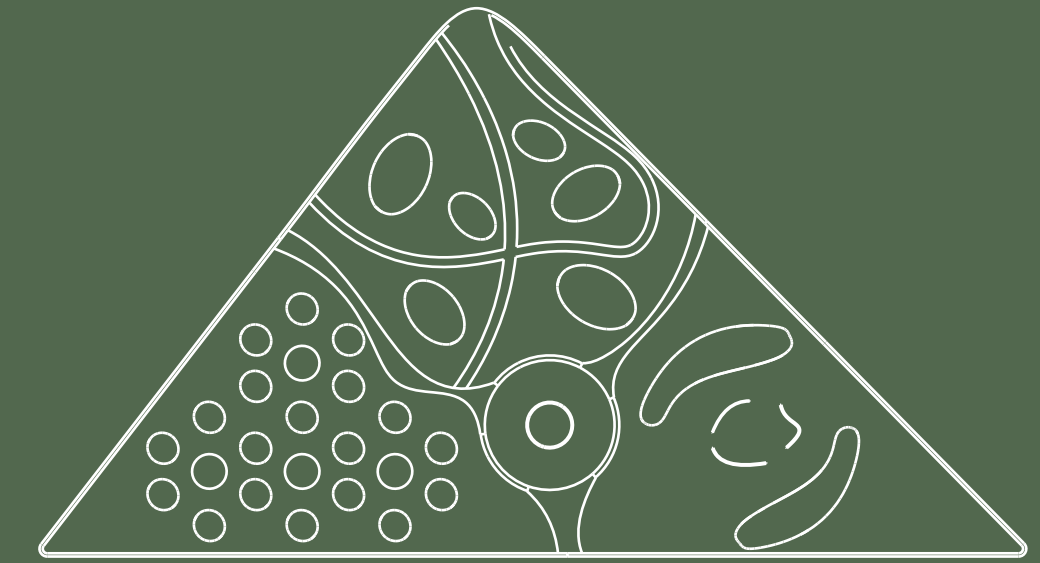
Surrounding and overhead screens will show the activities of the urban animals at in different time periods.



The sky hole mimics the relationship between cities and urban mammals: some interaction with the outside world while maintaining a sense of safety. Standing under the hole can experience the vulnerable feeling of mammals.

Insect Refugium

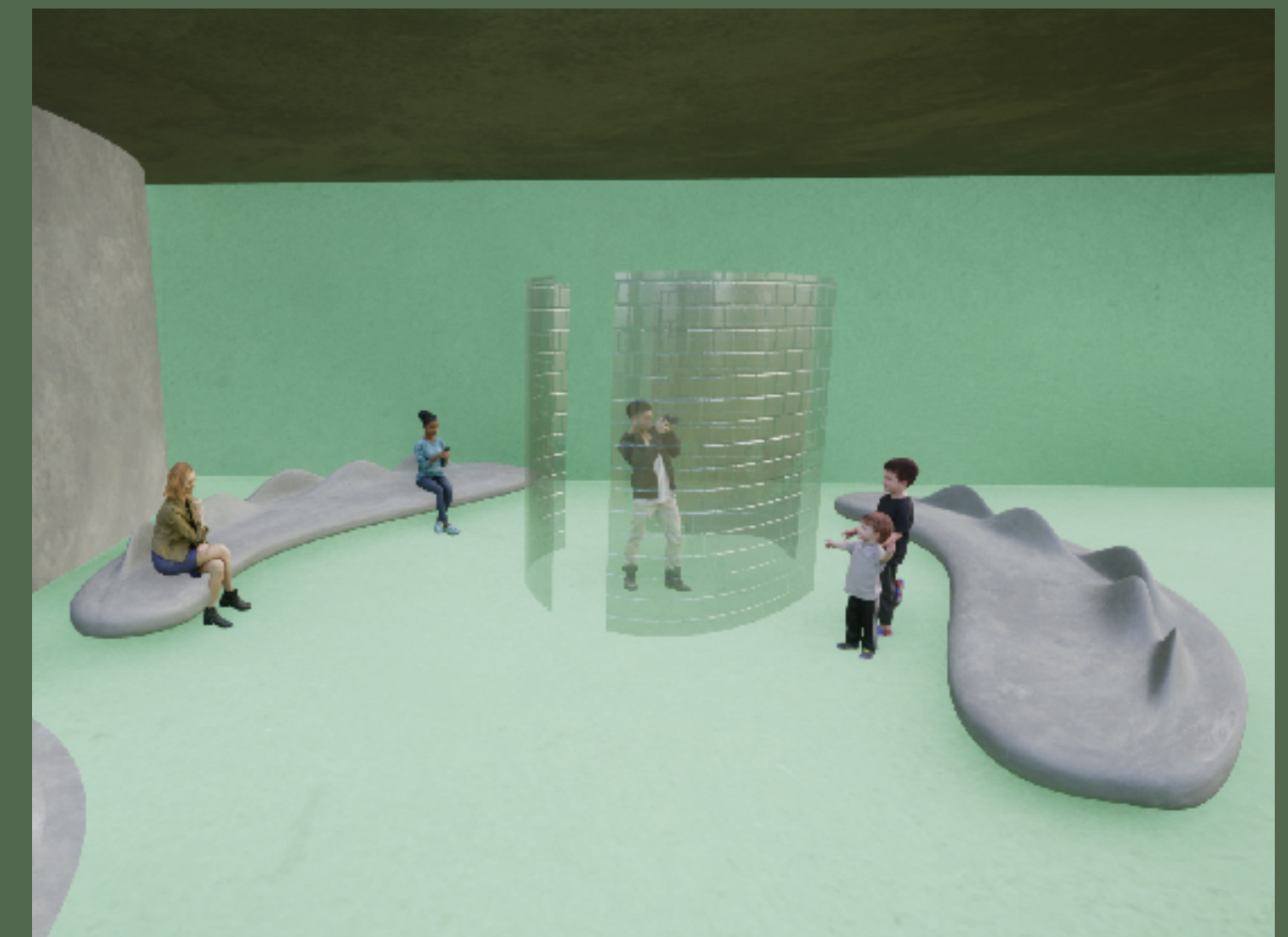
A place to learn about insects' group living and how they overcome urban barriers.



3 rooms are separated by dividers to mimic the urban barriers. Different floral scents and room colors are used to attract people with the same preferences, just as different flowers attract different pollinators.



When a person takes a seat, the center light will light up. The more people gather in this area, the lighter it becomes, creating a sense of belonging.



Interaction with the insects' vision: Microscope Lens, fisheye lens, and compound eye lens

Sustainable Features

Topographic Green
Roof Media Nature:

- Mulch mats
- Visqueen
- Soil
- Seeds
- Drip irrigation
- Various vegetation

Vegetation Example:

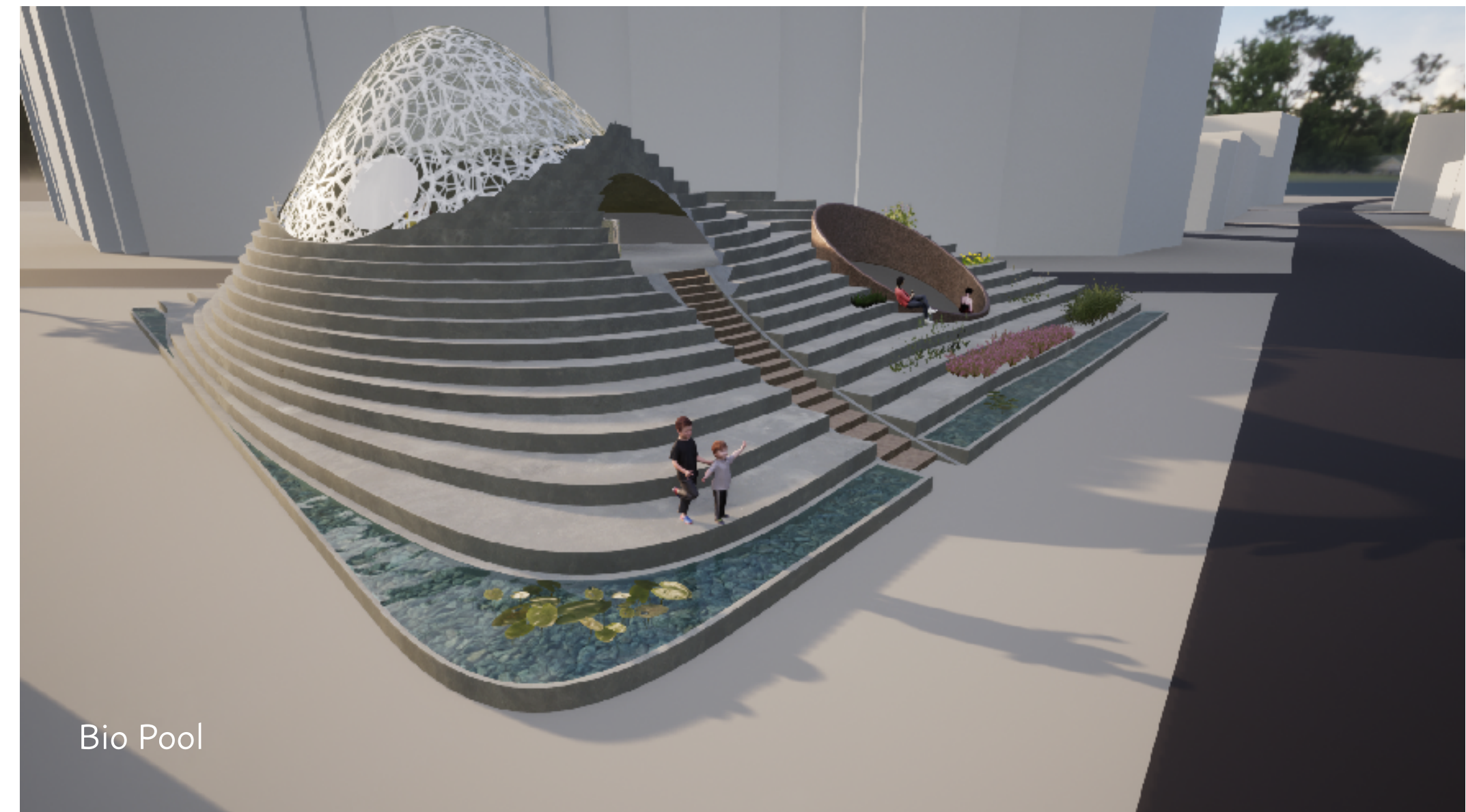


Topographic Green Roof

Various Vegetation to attract different creatures to increase species diversity



Weaved Dome



Bio Pool

Physical Model

